



THE RITZ - CARLTON

SINGAPORE





# ARRIVE

*Experience the beauty of Singapore*

At The Ritz-Carlton, Millenia Singapore, immerse yourself in a canvas of views comprising the hotel's renowned architecture, museum-quality art collection, and downtown location in iconic Marina Bay. From the mother-of-pearl ceiling which floods the lobby with natural daylight, to the spectacular hanging "Cornucopia" sculpture by Frank Stella, lush landscaped gardens and unparalleled views from our guest rooms, we seek to enliven your senses from the moment you arrive.





# RELAX

*Embrace the art of luxury  
and rejuvenation*

- 608 guest rooms with unrivalled views of Marina Bay, or the Singapore Flyer and Kallang River precinct
- The largest entry-level hotel room in Singapore at 51 square metres / 549 square feet
- Complimentary high speed Internet connectivity with a bandwidth of 1 Gbps
- The World's Sexiest Bathrooms featuring iconic octagonal windows
- The first La Mer hotel partner spa in Asia Pacific
- Outdoor swimming pool flanked by sun loungers, private cabanas, a pool bar and an outdoor grill
- 24 hour gym with state-of-the-art cardiovascular and weight training equipment, High Intensity Interval Training (HIIT) and TRX Suspension Training
- Access to the hotel's 4,200-piece contemporary art collection, including works by Frank Stella, Andy Warhol and Dale Chihuly





## *Indulge in residential hotel living*

- Upscale penthouse located on Level 32 that is 218 square metres / 2,347 square feet
- Ideal for hosting boardroom meetings, intimate dinners, product launches and cocktail parties
- 24-hour personalised butler service
- **Living Room**
  - Fitted with custom made furniture, a 65-inch LCD television, Sonos sound system, and a wall-flushed bar stocked with liquor and spirits
- **Dining Room**
  - Accentuated by a resplendent crystal chandelier, the custom-built dining table can accommodate a party of 10 guests
  - Can be converted into a boardroom complete with a built-in projector screen, and complimentary high-speed wireless Internet access
- **Pantry**
  - Fitted with Miele kitchen appliances such as a fridge, Nespresso coffee machine, oven, microwave and a wine fridge stocked with preferred wines
- **Entertainment Room**
  - Comprises a 75-inch LCD television, Sonos sound system, customisable game consoles, a plush sofa and leather recliner
  - Can be transformed into a king or twin guest bedroom
- **Master Bedroom**
  - Features a walk-in closet, plush feather bed and custom bed linens which enhance the Ritz-Carlton sleep experience
  - Extensive marble bathroom outfitted with double-sinks, a leather ottoman, an automated bidet, a separate shower stall / steam room and a two-metre long Jacuzzi bath





# ENJOY

## *Unwind with captivating views*

The Ritz-Carlton Club Level elevates the luxury hotel experience combining intimacy, comfort and bespoke hospitality. This exclusive space provides the ideal setting to conduct business in The Library, with multiple culinary offerings throughout the day.

### Club privileges include:

- Personalised arrival and departure service with check-in/out in your room or at the Club Lounge
- Culinary indulgences at the Club Lounge;
  - Breakfast: 6.30 a.m. to 10.30 a.m.
  - Midday Snacks: 11.30 a.m. to 2 p.m.
  - Afternoon Tea: 2.30 p.m. to 4.30 p.m.
  - Hors d'oeuvres and Cocktails: 5 p.m. to 8 p.m.
  - Desserts and Cordials: 8.30 p.m. to 10.30 p.m.
- Continuous pours of Champagne and house pour wines by the glass
- Two pieces of complimentary garment pressing or steaming services daily
- Complimentary coffee or tea served direct to your room upon request at any time of the day
- Complimentary limousine service within the Marina Bay precinct between 7 a.m. to 10 p.m. daily (*subject to availability*)
- Exclusive use of The Library for meetings of up to 10 attendees (*additional charges apply*)





# GATHER

*Create lasting and meaningful memories*

Every event – from the most intimate of private gatherings to the grandest of corporate celebrations – leaves a lasting impression on every guest. With more than 50,000 square feet of indoor and outdoor meeting and events space, along with expert attention to every detail by a team of dedicated catering and conference services managers, be assured that your event will be executed with flair, from beginning to end.



## *Meeting Venues*

- 4,651 square meters / 50,000 square feet of meetings and events space
- 13 meeting rooms which can accommodate between 10 to 1,000 persons;
  - The light-filled **Chihuly Room** on Level Three
  - **8 Millenia Rooms** on Level Two
  - 1,090 square meters / 11, 730 square feet pillar-less and light-filled Grand Ballroom on Level One that can accommodate up to 1,000 persons. Features 3 state-of-the-art LED video walls, which form the largest panoramic video wall in a hotel ballroom in Singapore, intelligent lighting and a concert quality sound system
- **Garden Pavilion** offers an air-conditioned outdoor venue, set amid lush greenery and bathed in natural daylight
- The **outdoor swimming pool** can be transformed into a dynamic lifestyle events arena
- **6 private dining rooms** including the versatile **Garden Suite** in Summer Pavilion (Level Three) are ideal for social celebrations or business meetings

## *Meeting Amenities*

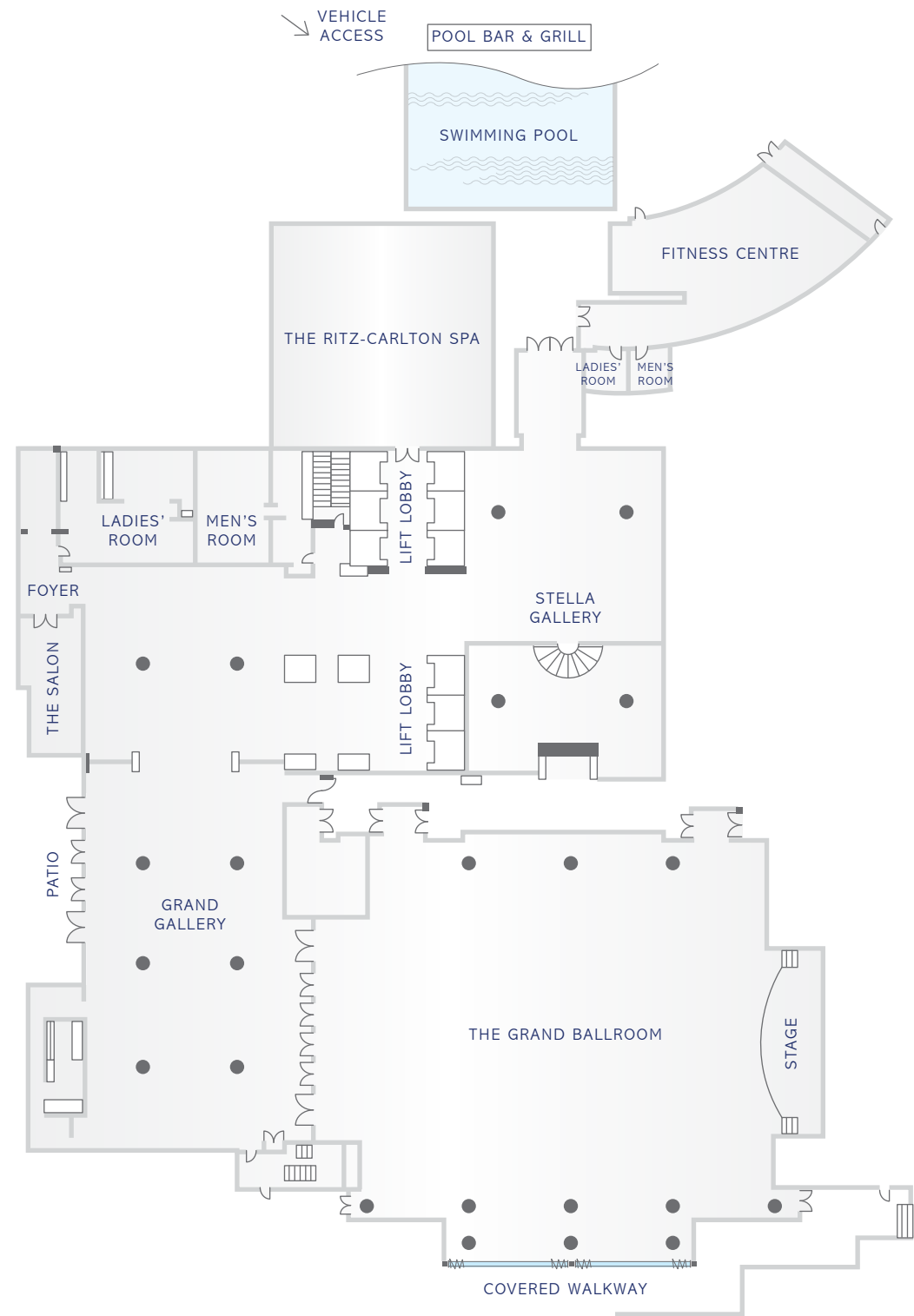
- Complimentary high speed Internet connectivity with a bandwidth of 1Gbps
- Portable Samsung Flip with a 55-inch display for dynamic and versatile interactive presentations
- State-of-the-art audio-visual and lighting equipment
- Team of dedicated meeting professionals
- Experienced conference services floor managers
- Personalised meeting packages
- Offsite catering services on a yacht, or at popular venues such as Gardens by the Bay, and Capitol Theatre



# Capacity Chart

Area	Square meters	Square feet	Dimensions in feet	Dimensions in meters	Ceiling Height (m)	Ceiling Height (ft)	Rounds of 10 (5 ft)	Rounds of 10 (6 ft)	Theater	Cocktail Reception	Conference	Classroom	U-Shaped	Hollow Square
<b>Level 1</b>														
Grand Ballroom	1085	11730	115 x 102	35 x 31	5	16.5	1000	740	1400	1200	0	720	90	132
Grand Gallery A	505	5457	107 x 51	32.4 x 15.6	3.3	11	260	200	220	500	54	126	51	-
Grand Gallery B	360	3960	79.2 x 50	24 x 50	2.5	8.5	160	140	-	500	-	-	-	-
Salon	36	403	31 x 13	9 x 4	2	7	20	20	42	25	22	15	21	-
Stella Gallery	234	2517	46.1 x 54.6	14.1 x 16.6	4.8	16	120	100	-	100	-	-	-	-
Outdoor Swimming Pool	-	-	-	-	-	-	200	-	-	1000	-	-	-	-
<b>Level 2</b>														
Millenia 1	216	2370	79 x 30	24 x 9	2.4	8	140	100	214	150	57	126	57	60
Millenia 2	122	1305	45 x 29	14 x 8.7	2.4	8	80	60	132	100	36	84	39	42
Millenia 3	108	1140	38 X 30	12 X 9	2.4	8	80	60	120	100	36	72	36	42
Millenia 4	108	1140	38 X 30	12 X 9	2.4	8	50	40	84	80	24	48	27	30
Millenia 5	72	783	29 x 27	9 x 8	2.4	8	50	40	50	50	18	36	18	24
Millenia 6	64	729	27 x 27	8 x 8	2.4	8	50	40	50	50	18	36	18	24
Millenia 7	29	324	27 x 12	8 x 3.6	2.7	9	-	-	-	-	12	-	-	-
Millenia 8	20	221	13 x 17	4 x 5	2.7	9	10	10	-	-	8	-	-	-
<b>Level 3</b>														
Chihuly Room	216	2325	44.3 x 52.5	13.5 x 16	4.8	15.8	140	120	234	150	39	127	45	39
Chihuly 1	108	1163	44.3 x 26.3	13.5 x 8	4.8	15.8	60	50	120	100	36	60	36	36
Chihuly 2	108	1163	44.3 x 26.3	13.5 x 8	4.8	15.8	60	50	120	100	36	60	36	36
Garden Suite, Summer Pavilion	61	659	33.5 x 19.7	10.2 x 6	3.5	11.5	30	-	80	-	25	30	30	-
Garden Pavilion	450	4841	98.4 x 49.2	30 x 15	6.8	22.3	250	200	350	300	40	200	85	110

# LEVEL ONE FLOOR PLAN



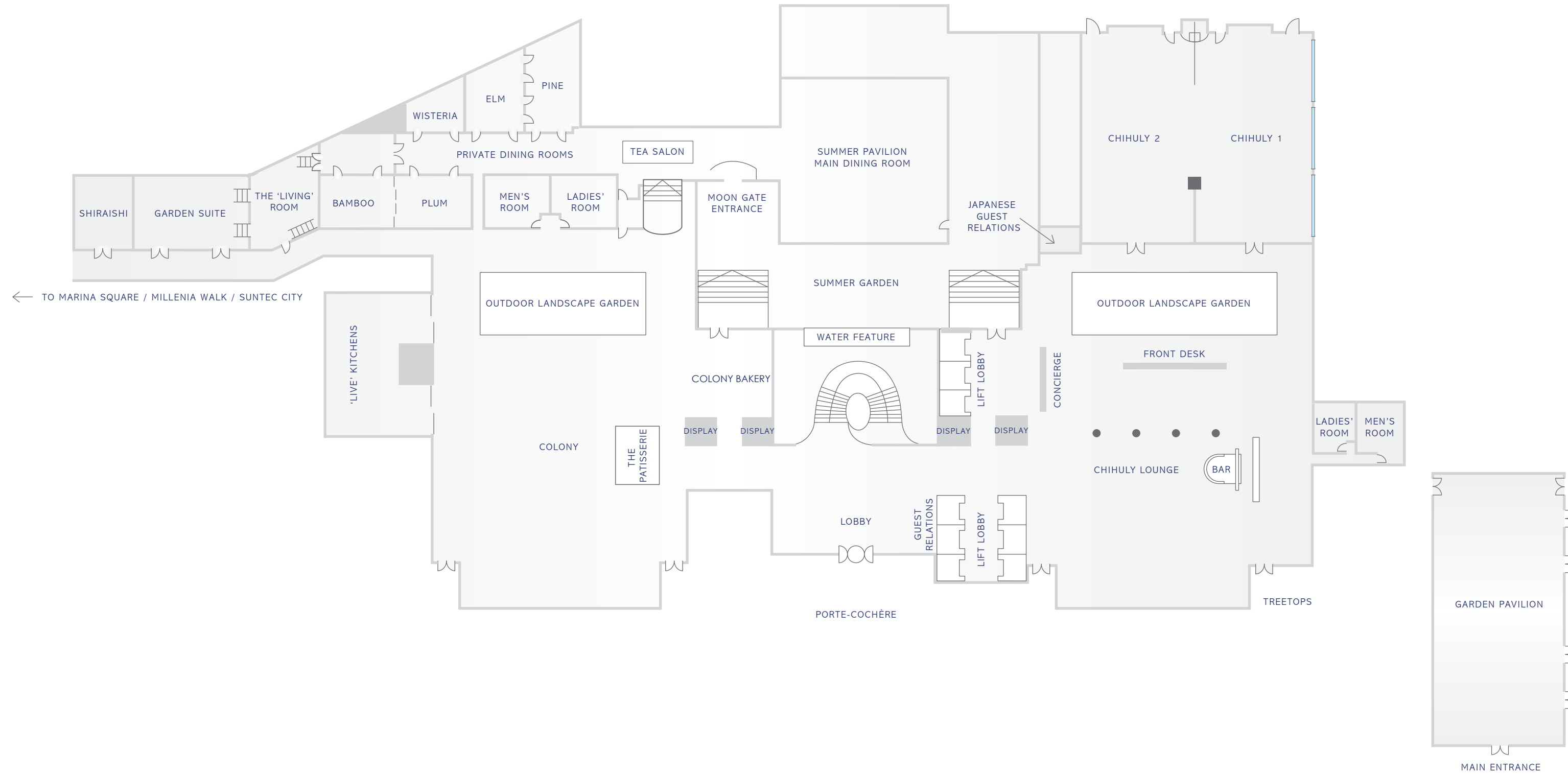
# LEVEL TWO FLOOR PLAN





# LEVEL THREE

## FLOOR PLAN







# LIFESTYLE EVENTS

## *Reimagine lifestyle parties*

Surrounded by lush greenery, the outdoor swimming pool located on Level One boasts a three-tiered timber pool deck flanked by sun loungers, private cabanas, a pool bar and an outdoor grill.

With a transparent overwater pool cover that adds over 15,000 square feet of outdoor events space, the pool area can be transformed into a dynamic events arena to host overwater fashion shows, product launches, cocktail parties, wedding solemnisations, and seated dinners.

### Overwater Pool Cover

- Made of Plexiglas, also known as acrylic glass which can be custom-built to take on various shapes
- Extremely durable, the transparent Plexiglas table-tops can support weights of up to 800 kilograms per cube





# ESCAPE

## The Ritz-Carlton Spa *Immerse in a timeless journey*

Designed to enliven the senses through evoking the true essence of the ocean and its healing benefits, The Ritz-Carlton Spa offers exclusive La Mer facials and signature massages.

- 10 treatment rooms including The Ritz-Carlton Spa Suite, complete with a romantic long bath and hydro-jets experience
- Signature spa experiences include Cello Concerto, Timeless Indulgence and Spa Masterclasses. Unique to The Ritz-Carlton Spa, the Cello Concerto is a body massage that is harmoniously synchronised with 'live' melodies played by a cellist
- The spa menu includes a curated selection of massages and even a Men's La Mer Custom Facial targeted at gentlemen
- The Timeless Capsule offers a private space for express treatments in between business meetings
- Le Salon Rose, which can be booked exclusively, offers bespoke podiatry services, manicures, pedicures, and personalised hair and make-up services. Perfect for spa-rties



## The Ritz-Carlton Gym *Fulfill your fitness aspirations*

- One of the largest hotel gyms featuring a comprehensive range of state-of-the-art fitness equipment
- High Intensity Interval Training (HIIT), TRX Suspension Training, cardiovascular endurance and weight training are available
- The Movement Studio is equipped with boxing gear, resistance bands and medicine balls to add variation to any workout





# SAVOUR

*Indulge in an exquisite culinary voyage*

Dining adventures mirror the city's kaleidoscope of international influences and indigenous cultures. Our two signature restaurants, Colony and Summer Pavilion, offer their own unique interpretation of the culinary experience – from the best of local heritage cuisines to Michelin Star dining – transforming every meal into an unforgettable journey.



Relax and unwind in Chihuly Lounge, named after famed American glass artist Dale Chihuly. Linger over light meals, afternoon tea or simply wind down the evening over bar bites and handcrafted cocktails, in the presence of Chihuly's stunning glass sculptures.

Here, you can impress your companions with the Art of Sabrage - a traditional ceremonial technique of opening a bottle of Champagne with a sabre.





## OUTDOOR CATERING

### *Catering to refined tastes*

Whether you desire an intimate al fresco party in the lush gardens of your residence or a more refined ambience at an iconic offsite location such as Gardens by the Bay, our catering specialists will deliver an event that will exceed every expectation.

To create an occasion that perfectly expresses how important your guests are to you, and to us, our culinary team is adept at customising menus to pander to all palates. Butler service, audio-visual support, bathroom amenities and valet services can be provided to ensure your event runs seamlessly.



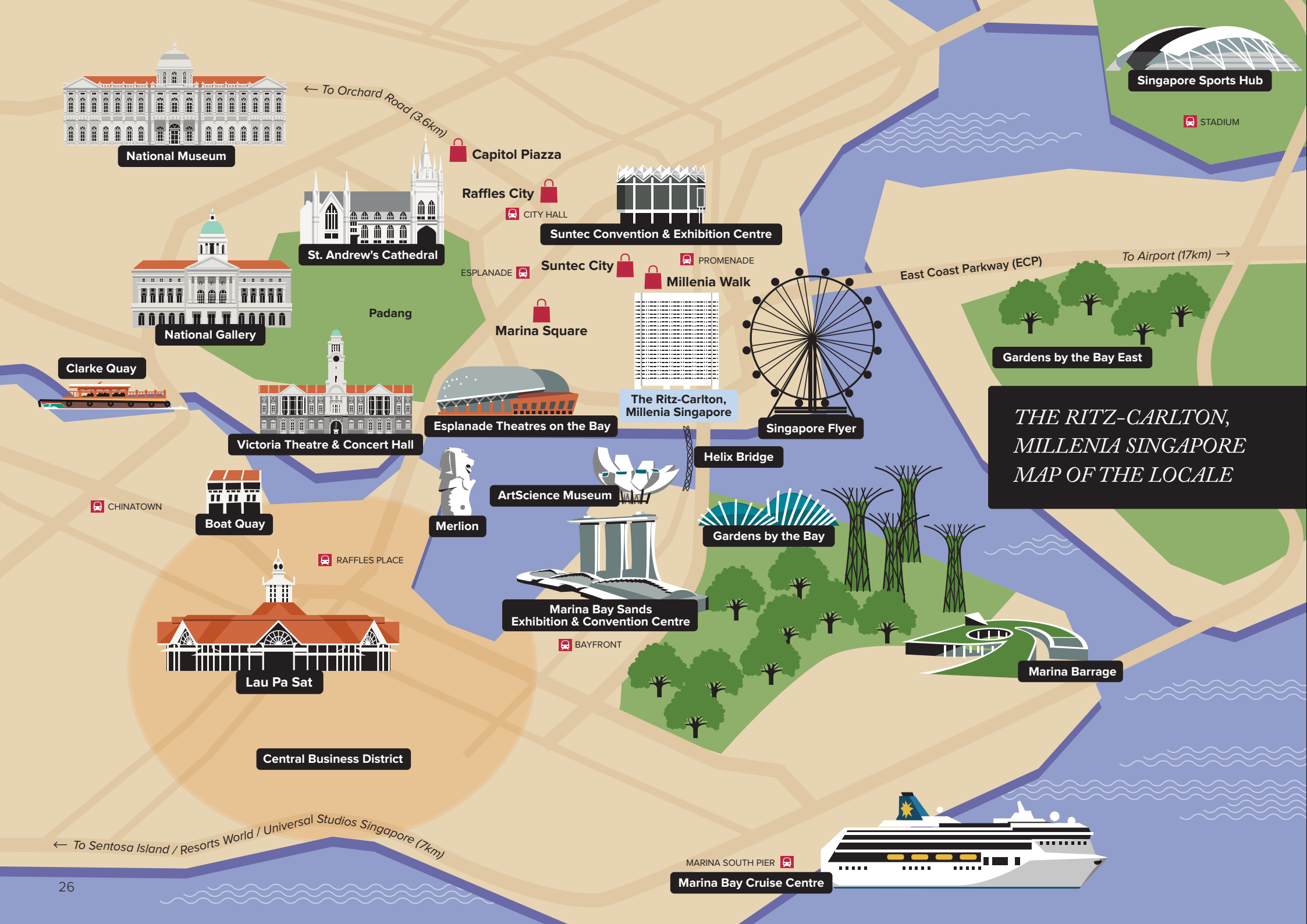
## DISCOVER

### *Revel in the exciting surrounds of Singapore*

Situated in the heart of Marina Bay, Singapore's captivating downtown core, where architectural gems such as Gardens by the Bay, the Singapore Flyer and ArtScience Museum dot the impressive skyline, we are ideally located for you to take in the sights, and unique experiences of this dynamic metropolis.

Located a 15-minute drive away is the world-renowned Changi Airport, while the Suntec Singapore Convention & Exhibition Centre is within walking distance from the hotel.





*THE RITZ-CARLTON,  
MILLENNIA SINGAPORE  
MAP OF THE LOCALE*



**THE RITZ-CARLTON**

MILLENNIA SINGAPORE

7 RAFFLES AVENUE

SINGAPORE 039799

T: 65.6337.8888 F: 65.6338.0001

RITZCARLTON.COM/SINGAPORE